

1. Timmins Museum: National Exhibition Centre

By far the largest museum in the James Bay Frontier, the Timmins Museum is an ideal place to capture the spirit of early northern settlers and pioneers. Newspapers and authentic mining artefacts, including an outdoor display are showcased. A different exhibit is featured every month in the Jury Gallery, which houses a variety of travelling exhibits from Canada and abroad. The Orange Tree Gallery features work from local and regional artists. The gift shop offers books, souvenirs, local artwork and crafts for sale. Admission is free.

Temporarily Located in the Porcupine Mall

Location: 360-2617

Hours: Open daily year-round
Monday to Friday
9:00am to 5:00pm
Saturday and Sunday
1:00pm to 5:00pm

2. Porcupine Art Club

The Porcupine Art Club's members have exhibited at the Timmins Museum, the Timmins Symphony and The Timmins District Hospital's Promenade. Various art projects are on display in the clubhouse and can be viewed at occasional public showing or by appointment.

Location:

Roy Nicholson Park, Timmins
Corner of Pine Street North and Eight Avenue

Tel: 264-8930 or email pjdallai@ntl.sympatico.ca Pam Dallaire

3. La Galeruche Art Gallery – Craft Shop

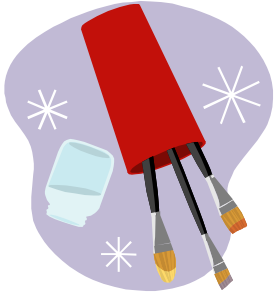
“Galerie d’art et Boutique d’artisanat du Centre Culturel Laronde Inc.” La Galeruche is a multi purpose facility. Not only is it a community centre but it is also an art gallery and also offers various entertainments and local activities. La Galeruche houses a craft shop where local francophone artists can sell their products and a gallery where they can exhibit their work.

Location:

32 Mounjoy Street North, Timmins

Tel: 267-8401

Hours: Monday to Wednesday
9:00am to 5:00pm
Thursday to Friday
9:00am to 7:00pm
Saturday
9:30am to 2:00pm



Come wander through our studios and galleries where you'll find unique, handcrafted, original and affordable local art, crafts, gifts and souvenirs

Hours:

Monday to Wednesday
9:30am to 5:30pm
Thursday to Friday
9:30am to 8:00pm
Saturday
9:30am to 5:00pm

Location:

42 Pine Street South, Timmins

Tel: 268-9585

This downtown treasure offers custom framing, art supplies, antiques, and giftware from all over the world. A second floor studio displays and sells prints from various artists.

4. Joanne's Art Centre

The gift shop is located in the Shania Twain Centre. It features a large selection of clothing, souvenir items, jewelry, unique native crafts, and Shania Twain merchandise. The shop also sells an assortment of fine art such as pottery, photography, and painting from local artists.

Location:

Shania Twain Way, Timmins

Tel:

360-2619 or Toll Free 1-800-387-8466

Hours:

Open 7 days a week
10:00am to 5:00pm

Website:

www.shaniawatraincentre.com

6. The Miner's Pick Gift Shop

The Centre's newest venture! Assisting local aboriginal artists in selling their art and craftwork. You will find authentic moccasins, dream-catchers, paintings, books, etc. This cultural centre is open to all non-aboriginal and aboriginal people.

Location:

316 Spruce Street South, Timmins

Tel:

268-6262

Hours:

Monday to Friday
8:30am to 4:30pm

5. Timmins Native Friendship Centre Moccasin Gallery and Gifts

The Centre's newest venture! Assisting local aboriginal artists in selling their art and craftwork. You will find authentic moccasins, dream-catchers, paintings, books, etc. This cultural centre is open to all non-aboriginal and aboriginal people.

316 Spruce Street South, Timmins

Tel: 268-6262

Hours: Monday to Friday
8:30am to 4:30pm

Location: 316 Spruce Street South, Timmins

Tel: 268-6262

Hours: Monday to Friday
8:30am to 4:30pm

Website: www.shaniawatraincentre.com

Location: Shania Twain Way, Timmins

Tel: 360-2619 or Toll Free 1-800-387-8466

Hours: Open 7 days a week
10:00am to 5:00pm

Website: www.shaniawatraincentre.com

Location: Shania Twain Way, Timmins

Tel: 360-2619 or Toll Free 1-800-387-8466

Hours: Open 7 days a week
10:00am to 5:00pm

Website: www.shaniawatraincentre.com

Location: Shania Twain Way, Timmins

Tel: 360-2619 or Toll Free 1-800-387-8466

Hours: Open 7 days a week
10:00am to 5:00pm

Website: www.shaniawatraincentre.com

Location: Shania Twain Way, Timmins

Tel: 360-2619 or Toll Free 1-800-387-8466

Hours: Open 7 days a week
10:00am to 5:00pm

Website: www.shaniawatraincentre.com

Location: Shania Twain Way, Timmins

Tel: 360-2619 or Toll Free 1-800-387-8466

Hours: Open 7 days a week
10:00am to 5:00pm

Website: www.shaniawatraincentre.com

Location: Shania Twain Way, Timmins

Tel: 360-2619 or Toll Free 1-800-387-8466

Hours: Open 7 days a week
10:00am to 5:00pm

Website: www.shaniawatraincentre.com

Location: Shania Twain Way, Timmins

Tel: 360-2619 or Toll Free 1-800-387-8466

Hours: Open 7 days a week
10:00am to 5:00pm

Website: www.shaniawatraincentre.com

Location: Shania Twain Way, Timmins

Tel: 360-2619 or Toll Free 1-800-387-8466

Hours: Open 7 days a week
10:00am to 5:00pm

Website: www.shaniawatraincentre.com

Location: Shania Twain Way, Timmins

Tel: 360-2619 or Toll Free 1-800-387-8466

Hours: Open 7 days a week
10:00am to 5:00pm

Website: www.shaniawatraincentre.com

Location: Shania Twain Way, Timmins

Tel: 360-2619 or Toll Free 1-800-387-8466

Hours: Open 7 days a week
10:00am to 5:00pm

Website: www.shaniawatraincentre.com



(See reverse for tour map)



Timmins Chamber of Commerce

(705) 360-1900

www.timminschamber.on.ca

August 2008

Canada



Government of Canada
Government du Canada

This project is funded in part by the Government of Canada